



NEWSLETTER

From the Noojee & District Historical Society Committee of Management – Email: noojeeheritage@gmail.com

FEBRUARY 2025



THEMES AND DISPLAY IDEAS FOR THE BUILDINGS AT THE NOOJEE RAILWAY STATION PRECINCT

GOODS SHED

- A tribute to the timber industry with primarily working tools.
- Volunteer office with
 - Noticeboard
 - Duty Roster Clip boards
- N&DHS Achievement boards
- Map Cabinets
- J550 uniforms / luggage for photos
- Merchandise / Brochures

LOUVRE VAN CARRIAGE

- A tribute to the timber industry
- Trestle Bridge Memorabilia
- Pioneer Life and Early Settlers
- Tributes to passed members
- Bushfires – 1926 & 1939
- Noojee Township & District History
- Adopt-a-Sleeper Platform campaign
- TV Screen and Seating
- Brochures

HERITAGE GIFTS & COFFEE CAFÉ

- Railway Images / Memorabilia
- Trestle Bridge Display
- Train Memorabilia

NEW FENCE & GATES

The installation of a yellow metal fence and gates along the Mt Baw Baw Tourist Rd to replace the star pickets and tape is completed.

The "dial before you dig" investigation identified a live telephone line on the property, and we have placed the fence in accordance with the plan to avoid any issues.

Next steps in March 2025 is to apply a final coat of paint and make some minor repairs.

NOOJEE HERITAGE GIFTS AND COFFEE CAFE noojeeheritage@outlook.com



The Heritage Gifts and Coffee is run by Michael, Crystal, Troy and team, part of a local family business. They are very excited to support the Noojee & District Historical Society. Their aim is to hire local workers and make sure visitors have a great time!

Call in and say "hello" and check out their amazing space!



VOLUNTEER CONNECT

Volunteer Sign-in Book

As mentioned in the January newsletter - we have introduced a new Sign-in Sheet for Volunteers.

There are 2 x lists, which will require Sign-in / Sign-off registration. The sheets are on separate clip boards in the Goods Shed.

1. Goods Shed, Louvre Carriage van 2. J550 and Facilities, Grounds & Railway Maintenance

The reason we are introducing a volunteer sign-in book is as follows:

1. It is important to keep a volunteer sign-in/out book as a risk management tool.
2. The volunteer sign-in book is in a prominent place with mandatory requirements that volunteers sign in and out.
3. The volunteer sign-in book is an essential emergency planning tool for accounting for volunteers on the premises.
4. A volunteer sign-in book is also important for counting the number of volunteer hours contributed to our organisation and will be used in grant applications.

Electrical Safety & Emergencies and First Aid

Eliminating or reducing risk can be achieved in many ways. Graeme Linaker, our OH&S Officer, has recommended that we review our Electrical Safety & Emergencies and First Aid. We will review all Graeme's recommendations in next coming months. Thanks for keeping us safe Graeme!

WORKING GROUP DATES FOR 2025

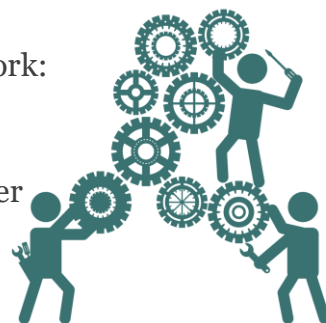
On Thursday, 20 February we had a working group that completed the following work:

1. Cleaned, tidied and moved furniture from the Storage Container
2. Started the initial set-up of the Louvre Van Carriage ready for displays
3. Moved items from the Goods Shed into the Louvre Van and Storage Container

Thankyou to all involved – great work!

Future Dates for the Working Groups starting at 10am at the Precinct

Thursday, 13 March / Thursday, 10 April / Thursday, 8 May / Thursday, 5 June 2025



A SPECIAL THANK YOU

- **Miles Spencer** - The Louvre Van Carriage had 3 x whirligigs installed by Miles last week. Additionally, Miles replaced the roofing iron on the J550 locomotive, that was blown off in the September 2024 mini cyclone.
- **Shane Brown** - Many thanks to Shane who moved the heavy crate at the end of railway line.

We look forward to keeping you up to date each month with all the activities.

Thank you everyone for all your support and assistance.

N&DHS Committee of Management – February 2025



For further information contact Angie Langoor, Secretary - Mobile: 0488 946 837